

JC-HICI 聚诚合创 *HD Video Products Reliable Manufacturer*

SHENZHEN JC-HICI TECHNOLOGY CO LTD

深圳市聚诚合创科技有限公司
Shenzhen JC-HICI Technology Co Ltd



地址:深圳市龙华新区大浪街道联建科技工业园 4 栋 204A

Add : 204A, No. 4 Building, Lianjian Technology Industrial Park, Huarong Road, Tongsheng Community, Dalang Street, Longhua District, Shenzhen, China. Tel : 86-755-33597760

Website : www.jc-hici.com

E-Mail Joan@jc-hici.com

Featured Products

4X2 HDMI MATRIX WITH AUDIO EXTRACT +TOUCH SCREEN CONTROL



MAIN FEATURES

- Control is via on Touch Screen or IR remote control.
- HDMI 1.4b, HDCP1.4 and DVI 1.0 compliant.
- Supports HDMI resolution the max up to 4K2K@50/60Hz (4:2:0), 4K2K@30Hz (4:4:4) . 3D
- EDID can be selected PASS , HDMI1.3 and HDMI1.4 modes on panel.
- Supports 3.5mm port analog audio extract output from HDMI output2 .
- Plug and play; Built-in ESD electrostatic protection and automatic equalization system

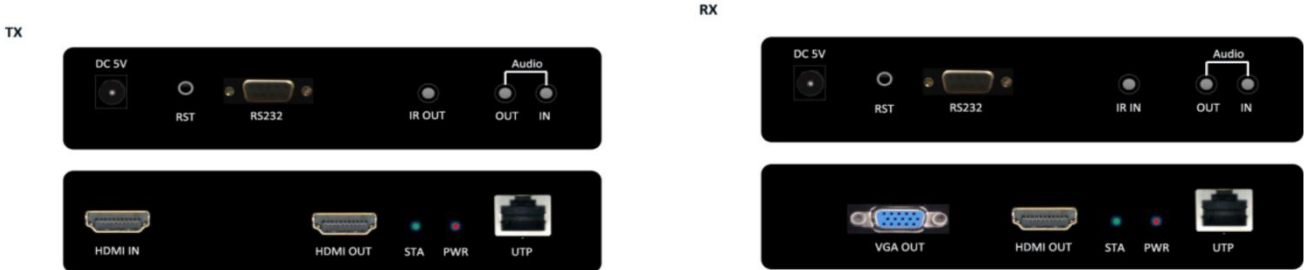
Model NO.	Resolution	Control Way	Protocol	Audio Extract	HDMI Port	Power Adapter	Product Size
JC-MS402H	4K@30HZ	Touching/Remote	HDMI1.4,HDCP1.4	Analog	HDMI 4 in, HDMI 2 out	5V1A X 1	175mm(L)×73mm(W)×21mm(H)

4K HDMI over IP Extender With H.265 Technology +IR+Audio+RS232+Loopout in TX+VGA out



MAIN FEATURES

- Support H.265 technology; Distance up to 100m over UTP CAT6 cable.
- Video resolution max up to 3840x2160p@30hz
- Supports two-way audio transmission
- Have a HDMI loopout in Sender; Receiver have 1 HDMI and 1 VGA output
- Support RS23, IR(20-60khz) signal pass back control .
- HDMI 1.4 and HDCP 1.4 standard.
- Built-in automatic adjustment system and ESD protection system;
- Real-Time Video/Audio Transmission over IP.
- Application Fields : 1 : N Solution (253pcs RX over Ethernet switch) .



Model NO.	Resolution	Distance	Protocol	Audio	Codec	Power Adapter	Product Size
JC-EX606H	4K@30HZ	100m	HDMI1.4,HDCP1.4	Dual-way	H.265	5V1A X 2	133mm(L)×90mm(W)×26mm(H)



60M HDMI CAT6 EXTENDER



MAIN FEATURES

- Uncompressed and zero latency
- Auto adjustment to match the cable length;
- Built-in ESD electrostatic protection circuit system
- The highest resolutions supported is up to 1080P@60Hz
- Extend HDMI signal over single UTP CAT6/6a/7 cable up to 60m
- Support EDID pass-through for smart match between the source device and display device
- Support POC function :only one power adapter is needed for the TX, the RX can be powered by the TX over network cable

Model No.	Highest Reslution	HDMI Data	Distance	Ethernet Cable	Ethernet Port	Power Adapter	Standard	Size
JC-EX601H	1920x1080p@60hz, 3D	6.75Gbps	60meters	CAT6	RJ45	5V1A x 1	HDMI1.3, HDCP1.3	79*43*23mm

60M HDMI CAT6 EXTENDER WITH POC FUNCTION



MAIN FEATURES

- Aluminum shell, compact size and Slim design, more beautiful and strong anti-interference, Wall-mounted type is more convenient.
- Uncompressed and zero latency transmission
- The highest resolutions supported is up to 1080P@60Hz; 3D
- Extend HDMI signal over single UTP CAT6/6a/7 cable up to 60m
- Support EDID pass-through for smart match between the source device and display device
- Support POC function :only 1 power adapter is needed for the TX, the RX can be powered by the TX over network cable
- Built-in ESD electrostatic protection circuit system

Model No.	Highest Resolution	HDMI Data	Distance	Ethernet Cable	Ethernet Port	Power adapter	Standard	Size
JC-EX601HP	1920x1080p@60hz,3D	6.75Gbps	60M	CAT6	RJ45	5V1A x 1	HDMI1.3, HDCP1.3	79*43*23mm

60M HDMI CAT6 EXTENDER WITH LOOPOUT & DUAL-BAND IR+POC FUNCTION

MAIN FEATURES



- Aluminum shell, compact size and Slim design, more beautiful and strong anti-interference, Wall-mounted type is more convenient.
- Transmit HDMI signal to 60m over cat6
- The highest resolutions supported is up to 1080P@60Hz; 3D
- Sender have a loopout
- Support POC unilateral power supply, need 1pc 12V power to TX/RX
- Support 2-way wide band infrared signal transmission
- Build-in EDID function, can match many kind display device;
- Ethernet cables with a standard IEEE - 568b connection, convenient installation
- Built-in ESD electrostatic protection circuit system
- Plug and play

Model No.	Highest Resolution	HDMI Data	Distance	Ethernet cable	Ethernet Port	Adapter	Standard	Size
JC-EX602H	1920x1080p@60hz, 3D	6.75Gbps	60m	CAT6	RJ45	12V1A x 1	HDMI1.3, HDCP1.3	82*85*17mm

60M HDMI KVM EXTENDER WITH LOOPOUT

MAIN FEATURES



- Aluminum shell, compact size and Slim design, more beautiful and strong anti-interference, Wall-mounted type is more convenient.
- Transmit HDMI signal to 60m over cat6
- Support Keyboard and mouse control
- Sender have a loop-out
- Resolution up to 1920*1080@60Hz
- Support POC unilateral power supply, need 1pc 12V power to TX/RX
- Support EDID copy ,Can solve compatibility problems

Model No.	Highest Resolution	HDMI Data	Distance	Ethernet Cable	Ethernet Port	Adapter	Standard	Size
JC-EX602HK	1920x1080p@60hz, 3D	6.75Gbps	60m	CAT6	RJ45	12V1A x 1	HDMI1.3, HDCP1.3	82*85*17mm

70M 4K HDMI HDBaseT EXTENDER WITH RS232 +DUAL BAND IR

MAIN FEATURES



- Aluminum alloy housing design, stable and durable ;compact size and Slim ,strong anti-interference, Wall-mounted type is more convenient;
- HDBaseT technology. Supports 3D signal
- Uncompressed transmits HDMI signals up to 30 meters for 4K@30hz over a cat6.; 70 meters for 1080P over cat6 .
- Support 2-way wide band infrared signal transmission;
- Support RS232 & CEC pass-through
- Build-in EDID function, can match many kind display device;
- Support POC unilateral power supply, need 1pc 12V power to TX/RX
- Compliance with HDMI 1.4 and HDCP 1.4 standard;
- Ethernet cables with a standard IEEE - 568b connection, convenient installation;
- Built-in automatic adjustment system,plug and play;

Model No.	Highest Resolution	HDMI Data	Distance	Ethernet cable	Ethernet Port	Power	Standard	Size
JC-EX603H-70M	3840x2160p@30hz	10.2Gbps	70m	CAT6	RJ45	12V1A x1	HDMI1.4, HDCP1.4	100*97.5*18.6mm

70M 4K HDMI HDBaseT KVM EXTENDER WITH RS232 +WIDE-BAND IR

MAIN FEATURES



- Aluminum alloy housing design, stable and durable ;compact size and Slim ,strong anti-interference, Wall-mounted type is more convenient;
- HDBaseT technology. Supports 3D signal
- Uncompressed transmits HDMI signals up to 30 meters for 4K@30hz over a cat6 ;70 meters for 1080P over a cat6 .
- Support for reverse-infrared signal return;
- The keyboard mouse is supported for transmission,
- Support RS232 and IR pass back, baud rate self-adaptive;
- Build-in EDID function, can match many kind display device;
- Support POC unilateral power supply, need 1pc 12V power to TX/RX
- Compliance with HDMI 1.4 and HDCP 1.4 standard;

Model No.	Highest Resolution	HDMI Data	Distance	Ethernet cable	Ethernet Port	Power	Standard	Size
JC-EX603HK-70M	3840x2160p@30hz, 3D	10.2Gbps	70m	CAT6	RJ45	12V1A x1	HDMI1.4, HDCP1.4	100*97.5*18.6mm

100M 4K HDMI HDBaseT KVM EXTENDER SUPPORT RS232 + IR

MAIN FEATURES



- Aluminum alloy housing design, stable and durable ;compact size and Slim ,strong anti-interference, Wall-mounted type is more convenient;
- HDBaseT technology. Supports 3D signal
- Uncompressed transmits HDMI signals up to 90 meters for 4K@30hz over a cat6 ;100 meters for 1080P over a cat6 .
- Support for reverse-infrared signal return;
- The keyboard mouse is supported for transmission
- Support RS232 and IR pass back, baud rate self-adaptive;
- Build-in EDID function, can match many kind display device;
- Support POC unilateral power supply, need 1pc 12V power to TX/RX
- Compliance with HDMI 1.4 and HDCP 1.4 standard;

Model No.	Highest Resolution	HDMI Data	Distance	Ethernet Cable	Ethernet Port	Power	Standard	Size
JC-EX603HK-100M	3840x2160p@30hz	10.2Gbps	100m	CAT6	RJ45	12V1A x1	HDMI1.4, HDCP1.4	100*97.5*18.6mm

100M 4K HDMI HDBaseT EXTENDER WITH RS232 +DUAL BAND IR

MAIN FEATURES



- Aluminum alloy housing design, stable and durable ;compact size and Slim ,strong anti-interference, Wall-mounted type is more convenient;
- HDBaseT technology. Supports 3D signal
- Uncompressed transmits HDMI signals up to 90 meters for 4K@30hz over a cat6.; 100 meters for 1080P over cat6 .
- Support 2-way wide band infrared signal transmission;
- Support RS232 & CEC pass-through
- Build-in EDID function, can match many kind display device;
- Support POC unilateral power supply, need 1pc 12V power to TX/RX
- Compliance with HDMI 1.4 and HDCP 1.4 standard;
- Ethernet cables with a standard IEEE - 568b connection, convenient installation;
- Built-in automatic adjustment system,plug and play;

Model No.	Highest Resolution	HDMI Data	Distance	Ethernet cable	Ethernet Port	Power	Standard	Size
JC-EX603HK-100M	3840x2160p@30hz 3D	10.2Gbps	100m	CAT6	RJ45	12V1A x1	HDMI1.4, HDCP1.4	100*97.5*18.6mm

120M HDMI IP EXTENDER WITH LOOPOUT and IR

MAIN FEATURES



- Aluminum shell, compact size and Slim design, strong anti-interference ; Wall-mounted type is more convenient.
- Distance up to 120m over UTP CAT5E/6 cable.
- Video resolution max up to 1920*1080p@60Hz.
- Support 1 to many receivers transmit （253pcs RX over Ethernet switch）.
- Support IR(38khz) signal pass back control .
- HDMI 1.3 and HDCP 1.2 standard.
- High compatibility, can auto-match source and display device.
- Built-in automatic adjustment system and ESD protection system;
- Simple to install, plug and play.
- TCP/IP Ethernet communication. Pure Ethernet , Simple Cabling .
- Application Fields : 1 : N Solution (Shop, classrooms,Monitor, Digital Camera ,TCP/IP Network).
- Ordinary 100M or 1000M Ethernet switch.

Model No.	Highest Resolution	HDMI Data	Distance	Ethernet Cable	Ethernet Port	Power	Standard	Size
JC-EX605H	1920x1080p@60hz	6.75Gbps	120m	Cat6	RJ45	5V1A x 2	HDMI1.3, HDCP1.2 TCP/IP	100*97.5*18.6mm

120M HDMI IP EXTENDER SUPPORT KVM+LOOPOUT+IR

MAIN FEATURES



- Aluminum shell, compact size and Slim design, more beautiful than iron shell, strong anti-interference ; Wall-mounted type is more convenient.
- Distance up to 120m over UTP Cat5e/6 cable.
- Video resolution max up to 1920*1080P@60Hz.
- Support keyboard and mouse control .
- Have a local HDMI loop-out ;
- Support IR(38khz) signal pass back transmission .
- HDMI 1.3 and HDCP 1.2 standard.
- High compatibility, can auto-match source and display device.
- Built-in automatic adjustment system, make the image smooth, clear and stable.
- Built-in ESD protection system; Simple to install, plug and play.
- TCP/IP Ethernet communication.
- Real-Time Video/Audio Transmission over IP.
- Pure Ethernet , Simple Cabling .
- Ordinary 100M or 1000M Ethernet switch.

Model No.	Highest Resolution	HDMI Data	Distance	Ethernet Cable	Ethernet Port	Power	Standard	Size
JC-EX605HK	1920x1080p@60hz	6.75Gbps	120m	CAT6	RJ45	5V1A x2	HDMI1.3, HDCP1.2 TCP/IP	100*97.5*18.6mm



DIGITAL HD FIBER EXTENDER



4K HDMI FIBER OPTICAL EXTENDER SUPPORT LOOPOUT+RS232

MAIN FEATURES

- Aluminum shell, small volume, lightweight design, more beautiful, strong anti-interference ability; wall-mounted type more convenient
- Uncompressed transmits HDMI video signals up to 2km over one fiber optic cable; (2-80KM SFP optional)
- Support video resolution up to 3840*2160@30Hz;
- Have local output in transmitter
- Support EDID copy function, improve compatibility, match signal sources and display devices
- Support RS232 signal unidirectional transmission, baud rate self-adaptive;
- Compliance with HDMI 1.4 and HDCP 1.4 standard;
- Built-in automatic adjustment system, make the image smooth, clear and stable;
- Built-in ESD protection system; Simple to install, plug and play;



Model No.	Highest Resolution	HDMI Data	Distance	Fiber Cable	Fiber Port	Power	Standard	Size
JC-EF301H	4K@30HZ	10.2Gbps	2KM	Dual fiber	LC	12V1A x2	HDMI1.4 , HDCP1.4	133*90*26mm

4K HDMI FIBER OPTICAL EXTENDER SUPPORT KVM+LOOPOUT+EDID

MAIN FEATURES

- Aluminum shell, small volume, lightweight design, more beautiful, strong anti-interference ability; wall-mounted type more convenient
- Uncompressed transmits HDMI video signals up to 2km over one fiber optic cable; (2-80KM SFP optional)
- Support video resolution up to 3840*2160@30Hz;
- Have local output in transmitter
- Support keyboard and mouse control;
- Support EDID copy function, improve compatibility, match signal sources and display devices
- Compliance with HDMI 1.4 and HDCP 1.4 standard;
- Built-in automatic adjustment system, make the image smooth, clear and stable;
- Built-in ESD protection system; Simple to install, plug and play;



Model NO.	Highest Resolution	HDMI Data	Distance	Fiber Cable	Fiber Port	Power	Standard	Size
JC-EF301HK	4K@30HZ	10.2Gbps	2-80KM	Dual fiber	LC	12V1A	HDMI1.4 ,HDCP1.4	133*90*26mm

4K DVI FIBER OPTICAL EXTENDER WITH RS232+LOOPOUT+EDIDCOPY

MAIN FEATURES



- Small size, light and thin design, strong anti-interference ability; wall-mounted design for a variety of scenes
- Long-distance transmission of DVI video and audio signals over 2 fiber cables up to 2KM;
- HD uncompressed video signal resolution up to 4096*2160@30Hz;
- Compliant with DVI 1.0 standards – high bandwidth digital content protection technology;
- Supports RS232 serial data transmission, adaptive baud rate;
- Support EDID learning, improve compatibility, match signal sources and display devices
- Built-in automatic equalization system, the picture is smooth, clear and stable;
- Built-in ESD electrostatic protection circuit to protect the system in all aspects;
- Easy to install, plug and play, no need to set up;

Model NO.	Highest Resolution	HDMI Data	Distance	Fiber Cable	Fiber Port	Power	Standard	Size
JC-EF301D	4K@30HZ	10.2Gbps	2-80KM	Dual fiber	LC	12V1A	DVI1.0	133*90*26mm

4K DVI FIBER OPTICAL EXTENDERSUPPORT USB/KVM+LOOPOUT+EDID

MAIN FEATURES



- Aluminum shell, small volume, lightweight design, more beautiful, strong anti-interference ability; wall-mounted type more convenient
- Uncompressed transmits DVI video signals up to 10km over one fiber optic cable;
- Support video resolution up to 4096*2160@30Hz;
- Have local output in transmitter
- Support EDID copy function, improve compatibility, match signal sources and display devices
- Support Keyboard and mouse control
- Compliance with DVI 1.0 standard;
- Built-in automatic adjustment system, make the image smooth, clear and stable;
- Built-in ESD protection system;
- Simple to install, plug and play;

Model NO.	Highest Resolution	HDMI Data	Distance	Fiber Cable	Fiber Port	Power	Standard	Size
JC-EF301DK	4K@30HZ	10.2Gbps	2-80KM	Dual fiber	LC	12V1A	DVI1.0	133*90*26mm

HDMI FIBER OPTICAL EXTENDER WITH AUDIO+RS232

MAIN FEATURES



- Transmits HDMI video signals up to 10km over one fiber optic cable;
- Support video resolution up to 1920*1200P@60Hz;
- Support external stereo audio unidirectional transmission;
- Support RS232 signal unidirectional transmission, baud rate self-adaptive;
- Compliance with HDMI 1.3 and HDCP 1.3 standard;
- High compatibility, can auto-match source and display device;
- Built-in automatic adjustment system, make the image smooth, clear and stable;
- Built-in ESD protection system;
- Simple to install, plug and play;

Model NO.	Highest Resolution	HDMI Data	Distance	Fiber Cable	Fiber Port	Power	Standard	Size
JC-EF302H	1200P@60HZ	6.75Gbps	10-80KM	Single-mode	LC	12V1A	HDMI1.3 ,HDCP1.3	130*105*29mm

2 WAY FIBER HDMI OPTIC EXTENDER WITH KVM+RS232+AUDIO

MAIN FEATURES



- Transmits HDMI video signals up to 10km over 2 way fiber optic cables ;
- Support video resolution up to 1920*1200@60Hz;
- Support external stereo audio unidirectional transmission;
- Support keyboard and mouse control
- Support RS232 signal unidirectional transmission, baud rate self-adaptive;
- Compliance with HDMI 1.3 and HDCP 1.3 standard;
- High compatibility, can auto-match source and display device;
- Built-in automatic adjustment system, make the image smooth, clear and stable;
- Built-in ESD protection system;
- Simple to install, plug and play;

Model NO.	Highest Resolution	HDMI Data	Distance	Fiber Cable	Fiber Port	Power	Standard	Size
JC-EF302HKP	1200P@60Hz	6.75Gbps	2-80KM	2 way single-mode	LC	12V1A	HDMI1.3 ,HDCP1.3	130*105*29mm

DIGITAL HD VGAFIBER EXTENDER WITH LOOPOUT+RS232+AUDIO

MAIN FEATURES



- Aluminum casing, small size, light and thin design, strong anti-interference ability; wall-mounted design is suitable for a variety of scenes
- Transmits VGA video signals up to 10km over one fiber optic cable;
- Support video resolution up to 1920*1200@60Hz;
- Support external stereo audio unidirectional transmission;
- Support transmitter one channel signal output;
- Support RS232 signal unidirectional transmission, baud rate self-adaptive;
- High compatibility, can auto-match source and display device;
- Built-in automatic adjustment system, make the image smooth, clear and stable;
- Built-in ESD protection system;
- Simple to install, plug and play;

Model NO.	Highest Resolution	HDMI Data	Distance	Fiber Cable	Fiber Port	Power	Standard	Size
JC-EF302V	1200P@60Hz	6.75Gbps	2-80KM	Single-mode	LC	12V1A	VGA	133*90*26mm

DIGITAL HD HDMI FIBER EXTENDER 20KM WITH LOOPOUT +IR FUNCTION

MAIN FEATURES



- Aluminum shell, strong anti-interference ability; wall-mounted type more convenient
- Using single Mode Fiber to transmit 20KM
- Video resolution up to 1920*1080@60Hz
- The sender supports HDMI local loop output
- Support for one sender to multi-receiver transmission via an optical switch
- Support infrared (38 KHz) signal return control
- HDMI 1.3 and HDCP 1.3 standards
- High compatibility, automatic matching of signal sources and display devices
- Built-in automatic adjustment system for smooth, clear and stable image
- Built-in ESD electrostatic protection circuit, easy to install, plug and play
- Real-time Video / Audio Transmission from HDMI to Fiber based on IP

Model NO.	Highest Resolution	HDMI Data	Distance	Fiber Cable	Fiber Port	Power	Standard	Size
JC-EF305H	1080P@60Hz	6.75Gbps	20KM	SM	FC	5V1A	HDMI1.3	100*97.5*18.6mm

DIGITAL HD HDMI FIBER EXTENDER 20KM WITH USB+ LOOPOUT +IR FUNCTION



MAIN FEATURES

- Aluminum shell, wall-mounted type more convenient
- Using single Mode Fiber to transmit 20KM
- Video resolution up to 1920*1080@60Hz
- Support keyboard and mouse control
- The sender supports HDMI local loop output
- Support infrared (38 KHz) signal return control
- HDMI 1.3 and HDCP 1.3 standards
- High compatibility, automatic matching of signal sources and display devices
- Built-in automatic adjustment system for smooth, clear and stable image
- Built-in ESD electrostatic protection circuit, easy to install, plug and play
- Real-time Video / Audio Transmission from HDMI to Fiber based on IP

Model NO.	Highest Resolution	HDMI Data	Distance	Fiber Cable	Fiber Port	Power	Standard	Size
JC-EF305HK	1080P@60Hz	6.75Gbps	20KM	Single-mode	LC	5V1A	HDMI1.3	100*97.5*18.6mm



9X1 SDI Multiview Split Processor

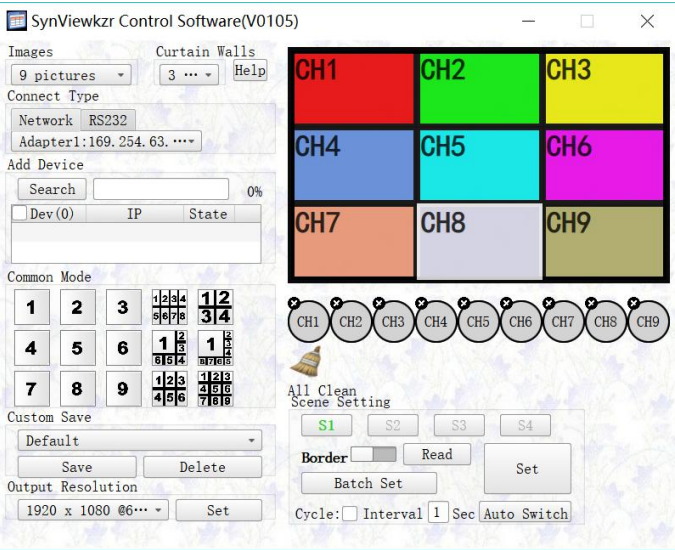


MAIN FEATURES

- High-speed FPGA enable full digital, lossless and seamless video switching and picture segmentation.
- Automatically recognize input signals and configure various display modes.
- Built-in automatic equalization, the picture is clear and stable.
- Built-in lightning protection tube and ESD protection circuit can effectively prevent lightning and anti-static.
- On-site installation: simple and convenient, plug and play, no need to set.
- Support RS232 serial port, Ethernet two control methods.
- Support for displaying multiple display modes.
- Support for power-off memory function.
- Support seamless switching.

Software control method

The computer can configure the SDI Processor in real time through RS232 serial port or Ethernet, the PC software control and set up the SDI processor in real time , and let the commonly used picture mode into the SDI Processor . Software features are comprehensive, easy to use, what you see is what you get.



4K HDMI1.4 SPLITTER



4K HDMI 1.4 SPLITTER

HDMI Splitter 1X2



Model NO.: JC-ES102HE

HDMI Splitter 1X4



Model No.: JC-ES104HE

1x2 & 1x4 & 1x8 HDMI Splitter Main Features

- 1 HDMI input signal split to 2/4/8 HDMI sink devices.
- 3D HDMI 1.4a video format support. HDCP 1.4 protocol compliant.
- Support EDID function, 8 management modes, strong compatibility.
- 3D video support including frame packing for all 3D formats up to a 297MHz TMDS clock.
- Support display resolutions up to 4K x 2K@30Hz, 1080P@120Hz, and 1080P 3D@60Hz
- Support deep color 30bit, 36bit, 48bit per pixel.
- Digital audio format, as DTS-HD/Dolby-true-HD/LPCM 7.1/DTS/Dolby-AC3/DSD.



Company Profile

JC-HICI Company is a professional audio and video extension transmission, video conversion, matrix manufacturer and video solution provider. The company's main products are HDMI cable extender, HDMI / VGA / SDI / DVI digital high-definition video optical transceiver, KVM switch, video matrix, splitter, etc., products are mainly used in security monitoring, video conferencing, projectors, home audio and video, large Video transmission fields such as screen transmission. The company is located in the municipality of Shenzhen, China, a city full of challenges and opportunities, technology and innovation.



QUALITY IS OUR CULTURE !

Contact : Joan Xia — COO

Email: Joan@jc-hici.com

Mob : +86 13058100704 Skype : joanjinxia

SHENZHEN JC-HICI TECHNOLOGY CO LTD